

EFFECTIVE FEB 2018



# Grove.

price list

<b>DATE</b>	<b>PAGE</b>	<b>MODIFICATION</b>	<b>DESCRIPTION</b>
2.1.18	14	Added Product	Added "M" option for CA125 unit
2.1.18	10	Fixed Pricing	Fixed pricing error of PD-COVE option on live edge table

**TABLE OF CONTENTS**

General Information ..... 2  
Limited Lifetime Warranty ..... 3  
Damages | Returns | Repairs ..... 4  
Ordering Information ..... 5  
GSA Customer Information ..... 6  
Freight..... 7  
Features & Advantages ..... 8  
Live Edge Warranty & Care..... 9  
Grove Live Edge Table..... 10  
Grove Stool/Table ..... 11  
Grove Credenza..... 14  
Power and Data..... 15



All DARRAN products are proudly manufactured in the U.S.A.

## PERFORMANCE TESTED

All products are tested to ensure performance exceeds BIFMA / ANSI standards.

## FINISH TECHNOLOGY

DARRAN has continued its partnership with AkzoNobel Chemicals ([www.akzonobel.com](http://www.akzonobel.com)) to develop a new finish technology further improving indoor air quality with a coating that meets today's environmental standards and supports LEED buildings.

ENVI-CT (Environmental Coatings Technology) utilizes advanced European finish technology to deliver a high-end furniture coating with superior performance in appearance and durability, allowing DARRAN to deliver more sustainable products to our customers.

### *ENVI-CT Advantages:*

- › ENVI-CT is a re-engineered high performance Coatings Top Coat
- › Exceptional hardness and clarity
- › Highly resistant to solvents and chemicals
- › Plasticizer Migration resistant
- › Excellent UV inhibitors for maximum color resistance
- › Exceeds current and proposed future Federal and State air quality requirements
- › Field Repairable
- › Dynamic chamber emissions tested and certified compliant to ANSI/BIFMA X 7.1 Standard / LEED 4.5 Standard for low – VOC emitting furniture.

## ADVANTAGES

DARRAN collaborated with the world's leader in finishing materials, to formulate an additive that will inhibit the growth of mold, mildew, fungus and bacteria on wood surfaces. This additive infuses Silver Ions into DARRAN's ENVI-CT (Environmental Coatings Finish Technology), creating a protective surface for the life of the furniture. The best part - is standard on all DARRAN Casegoods for no additional fee.



**LIMITED LIFETIME WARRANTY**

DARRAN Furniture Industries, Inc. (“DARRAN”) warrants that each piece of furniture manufactured in its North Carolina Facilities will be free from defects in material and workmanship for as long as the original purchaser owns and uses the product. Subject to the limitations and exclusions herein, DARRAN, at its discretion and as the sole remedy under the DARRAN Limited Lifetime Warranty, will replace or repair a defective product or components with comparable product or components free of charge. This warranty is made only to the original purchaser from an authorized DARRAN dealer, for as long as that original purchaser owns and uses the product.

**LIMITATIONS: USE / CARE**

- › Warranty is limited to normal single shift use.
- › Warranty is limited to generally accepted care and maintenance of natural wood products and environments.
- › Natural wood surfaces are subject to denting, scratching, and gauging if not properly used and cared for. Warranty is subject to use and care in accordance with the use and care instructions provided in the Product Care section of this site (including, but not limited to, the care and maintenance guide downloads linked thereon), available at [www.darran.com/product-care](http://www.darran.com/product-care), which are incorporated herein by reference.

**LIMITATIONS: MATERIALS / COMPONENTS**

- › Laminates, Veneers / Finishes - 10 Years
- › Electrical lamps, Ballasts, Transformers - 5 Years
- › Fabrics, Pneumatic lifts, Foam - 5 Years
- › Custom products built to customers specifications - 3 Years
- › Solid wood tables - 1 year

**WARRANTY EXCLUSIONS**

*Damage identified as carrier or installer related.*

- › Normal wear and tear of wood products during course of ownership.
- › Color, grain, or texture of natural wood materials, laminates, and other covering materials.
- › Damages or failures resulting from misuse, abuse, negligence, improper care, modifications, or relocation.
- › Non Commercial use or locations.
- › So-called “ghost” indentions and similar damage caused by the failure to use appropriate desk or writing pads.

All Warranty Claims are subject to DARRAN-approved inspections. Disputes may involve independent third-party evaluation

**QUALITY ASSURANCE**

DARRAN manufactures in accordance with the standards set by Architectural Woodwork Institute (AWI) for Quality Standards.

Every unit produced at DARRAN is completely inspected by an independent quality control team located within each plant whose emphasis is on assembly, finish, and final inspections with empowerment to stop any unit not meeting DARRAN’s high quality standards.

**LIGHT AND NATURAL FINISHES**

The beauty of veneer and all wood products comes from the

variations created by nature including color, grain, and texture. These variations are not considered defects and DARRAN’s Limited Lifetime Warranty does not cover color, grain and texture variations associated with natural wood and grain seen in any finish color. DARRAN sets standards for veneer selections; however, variations, especially apparent in light/natural finishes, will occur from one piece to another even if they are finished at the same time.

Finishes such as Clear Maple, Light/Gunstock Walnut, and Clear/Caramel Cherry will display more natural characteristics due to their light stain. Grain, pattern and color from unit to unit are not guaranteed or warranted and products will not be replaced due to these variations. Exposure to light and age will cause darkening of natural wood products; therefore DARRAN cannot guarantee or warrant finish match of new products being placed with existing products in the field.

**GLASS**

Use of glass overlays on surfaces will void DARRAN’s Limited Lifetime Warranty, unless the overlay is installed and maintained in strict accordance with DARRAN’s instructions. If an overlay is to be used, please contact DARRAN for installation and maintenance instructions.

**GENERAL**

Performance questions will be tested to generally accepted practices and AWI guidelines and standards for wood veneer furniture. To obtain performance of the Limited Lifetime Warranty, the purchaser should contact in writing the authorized DARRAN representatives or current dealer who sold the product to the purchaser or mail the warranty claim to:

Warranty Department  
 DARRAN Furniture Industries, Inc.  
 P.O. Box 7614  
 High Point, NC 27264  
 Telephone: 336-861-2400      Toll Free: 800-334-7891  
 email: [warranty@darran.com](mailto:warranty@darran.com)

EXCEPT FOR THE LIMITED LIFETIME WARRANTY EXPRESSLY DESCRIBED HEREIN, DARRAN MAKES NO OTHER REPRESENTATION OR WARRANTY OF ANY KIND, EXPRESS OR IMPLIED. DARRAN MAKES NO WARRANTY OF MERCHANTABILITY OR FITNESS FOR A PARTICULAR PURPOSE, AND DARRAN WILL NOT UNDER ANY CIRCUMSTANCES BE LIABLE FOR ANY INCIDENTAL OR CONSEQUENTIAL DAMAGES, OR ANY INDIRECT OR SPECIAL DAMAGES.

**THE WARRANTY AS STATED ABOVE, SUPERSEDES ALL PREVIOUS WARRANTIES**

**NO HASSLE FREIGHT DAMAGED MERCHANDISE**

DARRAN products are packed in specially designed crates and padding that protects all edges and corners from damage.

For qualified freight damage claims DARRAN will take responsibility for the claim and remedy processes including assuming total cost coverage from claim settlements.

(Some items may not qualify. Contact Factory for specific details.)

**QUALIFIED CLAIM CONDITIONS****VISIBLE CARTON DAMAGE**

1. Take digital pictures of the damaged carton and damaged furniture if visible damage is found upon delivery at the dock
2. Open all cartons with puncture or crushed corner damage.
3. Note any damage to the goods on the Carrier's freight bill as number of pieces damaged.

**CONCEALED DAMAGE**

1. Take digital pictures of the furniture as it sits partially unpacked. Also, photograph external and internal carton materials that correspond with the damaged area on the product.
2. Carton and damaged unit(s) must be located at the location matching the original delivery address for Carrier inspection.
3. Digital pictures must be provided of the damaged furniture and carton materials

For qualified claims per above contact DARRAN Customer Service Department at 1-800-334-7891 or complete DARRAN's online warranty report form within the 15 day limit. [www.darran.com/warrantyreport](http://www.darran.com/warrantyreport)

**NON-QUALIFIED CLAIM CONDITIONS**

1. Deliveries made to non-dock locations
2. Claims made after furniture is installed and/or removed from original delivery location
3. Carton and padding has been discarded
4. Carrier used was not DARRAN approved
5. Inspection reveals questionable damages

**REPLACEMENT ORDERS**

Replacement orders entered without replacement tagging or factory authorization is considered a new order without dispute, therefore full payment is expected and will be collected.

**RETURN SHIPMENTS**

DARRAN will not accept return of merchandise without a signed RA (return authorization) form.

DARRAN will specify the carrier to be used. Return bills of lading must be marked "Class 125" freight rate and a copy of the RA should be used as a packing list. All returns must be received by DARRAN within 30 days of the RA date or the products will be considered accepted by the customer.

All products being returned must be properly packed and protected to avoid freight damage. Whenever possible, use the original cartons in which the merchandise was shipped. Freight damage, signs of usage, missing parts, etc., will result in an adjustment of any credit to be issued.

DARRAN will issue RA's for the following reasons:

1. Manufacturing defect (inspection required)
2. Order processing error by DARRAN
3. Shipping error
4. Mismatched carton / merchandise

**SPECIFICATION CHANGES**

We reserve the right to change without notice any dimension, style, or specification of any model in the DARRAN line. Dimensions shown in the price list are nominal. It is the buyer's responsibility to read specification carefully when matching existing goods is desired.

**MANUFACTURING DEFECTS**

Claims of manufacturing defects will not be entertained without prior consultation with DARRAN's warranty department. Unauthorized deduction in payment of invoices will not be allowed without prior factory approval. Unapproved deductions are subject to factor's late payment charges.

**DAMAGE CLAIMS**

Claims of manufacturing damage or freight damage reported as nicks, dents, scratches, etc. after installation of furniture will not be covered under warranty or freight claim.

**ATTENTION:** Damage claims involving glass or stone components must be inspected and damage noted on delivering freight bill to qualify for replacement.

**REPAIR CHARGES**

Factory authorization must be secured from DARRAN's warranty department prior to incurring repair charges. Warranty will utilize DARRAN's National Repair Service through the Furniture Medic Franchise ([www.furnituremedic.com](http://www.furnituremedic.com)).

Repair charge authorizations are based on:

- › Set travel rate
- › Average regional job rate
- › Factory set maximum repair time
- › Falsely reported defect claims are subject to local service charges being charged to dealer/distributor.

**FINISH MAINTENANCE**

Wood office furniture and wood finishes can retain their natural beauty for life if proper care is taken and a stable environment is provided. Fluctuations in humidity and temperature cause panels and solid wood components to expand and contract and may lead to panel warpage and finish "checking" or cracking. Prolonged exposure of furniture to dry heat during winter months should be avoided. Careful examination of interior wood trim may indicate a damaging dry environment. If open joints, splits and cracks are appearing in trimwork consult with a HVAC professional for appropriate remedy.

DARRAN finishes are field repairable should damage occur. Professional furniture repair services are recommended. Regular cleaning with a non-silicone polish is recommended.

**ORDERING**

All orders should be emailed, mailed or transmitted by fax to:

DARRAN Furniture Industries, Inc.  
P.O. Box 7614  
High Point, NC 27264  
email: orders@darran.com  
Fax: 336-861-6485

DARRAN will only accept orders from authorized Dealers. All orders must be accurate and detailed. All Quick Ship orders must contain Quick Ship product ONLY. Orders should be separated and submitted according to lead time. Orders must contain Quick Ship code "QS" or have designated Quick Ship lead time to ensure correct order entry. Orders that contain multiple lead time products will be entered as one order and scheduled with the most extended lead time.

**CREDIT APPROVAL**

All orders are subject to credit approval for open account. All new accounts must be approved by a local DARRAN Sales Representative and should submit current financial information and trade references to:

DARRAN Furniture Industries, Inc. ATTN: Credit Department  
P.O. Box 7614  
High Point, NC 27264  
Telephone: 336-861-2400 Toll Free: 800-334-7891  
Fax: 336-861-2512

Orders submitted without accounts pre-approval or credit approval are subject to acceptance with lead times scheduled only after approval dates.

**LEAD TIME SCHEDULE**

DARRAN cannot assign a firm lead time until Credit approval and order accuracy are complete. Extended lead times due to credit or information delays are the responsibility of the Buyer.

**ORDER DELAY / HOLD**

Due to the committed manufacturing cost on Quick Ship processes, DARRAN cannot delay or hold orders, either in process or after completion.

**CANCELLATION AND ORDER CHANGES - FEES**

Acknowledged orders are considered firm orders and therefore not subject to cancellation or change. However, in the event we are able to stop an order prior to manufacturing process, we will consider cancellation or changes with a reprocessing fee of \$40.00 Net. Exceptions: Quickship orders cannot be changed or canceled after the 3rd business date after acknowledgment. Qualified changes/cancellations will be assessed a \$40.00 Net processing fee.

Changes or cancellation of order with special options or custom quoted items are also subject to additional material and vendor fee costs, plus a DARRAN special/custom reprocessing fee of \$100 NET.

**ORDER MOVEUPS**

Should an original scheduled ship date need to be improved, the Factory must be contacted 15 business days prior to the desired ship date. Move ups are subject to schedule availability.

**ORDER ACKNOWLEDGMENT**

Upon credit approval your order will be acknowledged and identified by an order number. When making reference to your order, please use this order number. Your acknowledgment is a detailed description of our interpretation of your order, pricing, shipping information, and estimated delivery date.

If you have not received an Acknowledgment within 10 Days of order issue, contact Customer Service immediately. All Quick Ship order acknowledgments will be faxed or emailed upon request to speed processing. Please read your acknowledgment carefully for correctness and notify DARRAN immediately of any discrepancies. Failure to notify relieves DARRAN from error liability.

Order acknowledgment is the final agreement between DARRAN and the customer superseding all previous communications regarding the order. DARRAN will not be responsible for errors made on orders placed by phone without written confirmation.

**SELLING INFORMATION**

Possession of this price list does not in itself constitute the right to sell DARRAN products. DARRAN products are sold and distributed through authorized dealerships. Contact factory for a listing of local representatives and dealerships.

**INVOICE TERMS**

Standard terms are NET 30 days. Finance charges of 1-1/2% will be added to delinquent accounts after 45 Days and for each 30 Days thereafter until paid.

Complaints involving newly received merchandise must be reported within 10 days from receipt to qualify for full invoice remittance suspension or term extension. Otherwise only items in dispute can be suspended from payment of invoice within terms.

**WAREHOUSE/STORAGE**

DARRAN will determine order warehousing approvals on a case by case basis. Orders that can be accommodated will be limited to a max of 30 days storage and must be invoiced at time of storage. Orders that exceed factory storage capacity will be transferred to local storage facilities subject to current storage rates and handling-transit charges. Storage charges must be paid prior to order release to shipping.

**EXECUTIVE OFFICE & CONFERENCE ROOM  
FURNITURE**

**November 3, 2015 through November 2, 2020**

FSC Group 71

GSA CONTRACT NUMBER: GS-27F-001DA

Business Classification:

WBENC Certified Woman-Owned Small Business

DARRAN FURNITURE INDUSTRIES

2402 SHORE DRIVE

HIGH POINT, NC 27263

336.861.2400 FAX 336.861.6485

Business Classification:

Woman-Owned Small Business

On-line access to contract ordering information, terms and conditions, up-to-date pricing, and the option to create an electronic delivery order are available through GSA Advantage!, a menu driven database system. The INTERNET address for GSA Advantage is <http://www.fss.gsa.gov>

For more information on ordering from Federal Supply Schedules click on the FSS Schedules button at <http://www.fss.gsa.gov>

**1a. Special Item Number**

711-8: Executive Office Furniture

711-9: Executive Conference Room Furniture

711-11: Tables and Accessories

711-16: Upholstered Seating

711-18: Multi-purpose Seating

**2. Maximum Order Limitations:**

711-8 \$500,000

711-9 \$500,000

711-11 \$500,000

711-16 \$300,000

711-18 \$200,000

**3. Minimum Order: \$100**

**4. Geographic Coverage:** 48 Contiguous States and the District of Columbia

**5. Point of Production:** High Point, North Carolina (Randolph County)

**6. Discount:** Prices shown herein are List (Discount is 56.9% Off List)

**7. Quantity Discounts:**

• \$467,837 List to \$1,000,000 List = 59.70%

• \$1,000,001 List to \$1,315,789 List = 61.70%

**8. Payment Terms:** ½% - Net 15 Days, Net 30 Days

**8a. Terms and Conditions of Government Credit Card Acceptance:**

a. No discount allowed for payment by Government Purchase Card

b. Provide commercial credit card number

c. Provide commercial credit card expiration date

d. Provide individual's name as it appears on

credit card

e. Provide telephone number of individual to whom credit is issued

**9a. Government Purchase Cards are accepted below the Micro Purchase Threshold.**

**9b. Government Purchase Cards are accepted above the Micro Purchase Threshold.**

**10. Foreign Terms:** None

**11a. Time of Delivery:** Regular Product: 60 - 90 days after receipt of order

Quick Ship Program: Contact DARRAN

**11b. Quick Ship Program:** Items available for expedited delivery are included in main Price Lists.

**11c. Overnight and 2-day delivery:** N/A

**11d. Urgent Requirements:** Will be considered on an individual basis. Contact DARRAN for details.

**12. FOB Point:** All destinations are limited to Commercial docks only. Carriers may refuse non-dock deliveries.

**12a. Freight Prices:**

a. All prices shown are suggested list prices with freight included where indicated.

b. Freight allows delivery to one qualified destination.

c. Within the Continental USA, all orders above \$1,500 net are shipped FOB factory, freight prepaid and allowed. All orders less than \$1,500 net will be subject to a \$100 net freight charge.

**13. Ordering Address:**

DARRAN Furniture Industries

P.O. Box 7614

High Point, NC 27264

Ph: 800.334.7891

Fax: 336.861.6485

**13a. Payment Address:**

BB&T

P.O. Box 890011

Charlotte, NC 28289-0011

**14. Warranty Provision:** Limited Lifetime (Contact DARRAN for details)

**15. Export Packing Charges:** Quoted on request

**13. Terms and Conditions: Order Cancellation / Changes.**

Restocking/Returns: No merchandise may be returned without a return authorization and shipping instructions. No credit or allowance will be given for repairs to defective materials unless DARRAN has given authority to make such repairs. A restocking charge of 25% will apply.

Cancellation: No cost prior to production. After

## gsa customer information

production has begun, only actual cost incurred will be billed to the Government that cannot be recovered through resale in 6 months

**14. Terms and Condition of Rental, Maintenance and Repair: Consult the Factory.**

**15. Terms and Conditions of Installation:** Installation by a Third party to be quoted on a per job basis. The ordering must specify what ranges of installation services are required.

**16. Terms and Conditions of Repair Parts:** Contact DARRAN for details.

**17. List of Service and distribution points:** Contact DARRAN for details..

**18. Preventative Maintenance:** Information enclosed with product.

**19. List of Participating Dealers:** Contact DARRAN for details.

**23. Environmental Attributes:** DARRAN is compliant with EPA standards. All plywood core material is CARB 2 compliant and contains recycled content. All DARRAN Casegood Products are BIFMA Level 2 Certified. DARRAN is FSC CoC Certified and our products are MAS Certified for Indoor Air Quality.

**23a. Recyclable and Recycled Content Packaging:** The corrugated packaging that is supplied to DARRAN, meets the federal mandate that requires the paperboard to be composed of 30%-50% recycled paper, and in some cases the recycled content is close to 100%.

**23b. Chemical Emission:** DARRAN finishes its products in an ENVI-CT Finish. (Environmental Coatings Technology). DARRAN's seating is finished with a low VOC Conversion Varnish and the casegoods are finished with a formaldehyde free, low VOC Urethane finish. These ENVI-CT finishes allow DARRAN's products to be MAS Certified Green under the ANSI BIFMA X7.1 Standard. Products assist with LEED 4.5 Credit.

**23c. Vapor Emissions:** DARRAN's ENVI-CT finishes use the latest environmental coatings technology to provide lasting durability and exceptional clarity. The ENVI-CT finishes allows DARRAN casegoods to be MAS Certified Green meeting LEED Credit 4.5.

**24a. Duns Number:** 08-363-5318

**24b. Cage Code:** 0Y-6B6

**24c. Federal ID Number:** 56-117-1971

**24d. NAICS Code:** 337211

**25. SAM Network:** DARRAN is registered



## SHIPPING SCHEDULE

When requested, DARRAN will assist in locating special express carriers that may have short transit times. These services may exceed our prepaid freight costs; therefore, pricing is limited to the Freight Excluded formula with special express charges added to the invoice.

For special deliveries, DARRAN will make every effort to meet the appointed time; however DARRAN will not be responsible for any additional charges for late deliveries beyond our control.

## PRICES

- › All prices shown are suggested list prices with freight included where indicated.
- › Freight allows delivery to one qualified destination.
- › Within the Continental USA, all orders above \$1,500 net are shipped FOB factory, freight prepaid and allowed. All orders less than \$1,500 net will be subject to a \$100 net freight charge.

## CALL BEFORE DELIVERY REQUEST

DARRAN will arrange for carriers to call before delivery when requested.

Important Non-Qualified Destinations DARRAN Prepaid Freight Pricing does not include delivery to:

- › Residential Areas
- › Restricted Commercial Areas
- › No Dock Locations
- › Inside delivery/setup service

Orders received and installed without professional Furniture Installers voids all Warranty Coverage.

## CARRIER SELECTION

DARRAN selects and uses only carriers specialized in furniture transportation. Customer requested carriers can be authorized using Freight Excluded pricing with invoice add-on.

## SPECIFIC DELIVERY TIMES

DARRAN will assist in coordinating a requested delivery time from a carrier. DARRAN makes no guarantees and accepts no responsibility for such services as DARRAN has no control over possible carrier hazards. To ensure specific time arrival, we recommend arranging single stop, designated load carriers. Less than trailer load (LTL) shipments cannot be coordinated for a guaranteed delivery time.

## EXPRESS CARRIERS

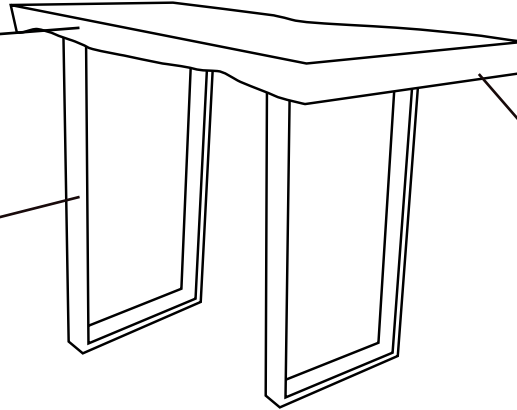
When requested DARRAN will assist in locating special express carriers that may have short transit times. These services exceed our prepaid freight cost, therefore, pricing is limited to the Freight Excluded formula with special express charges added to invoice.

From Table edge to the leg:  
120" = 17" Inset  
96" = 12" Inset  
76" = 10" Inset

Butterflies are hand placed based on the tables natural cracks. Natural cracks in the wood are considered normal and enhance the beauty of the tables.

Every table is unique with live edge detailing

Metal Legs available in Black or Silver



The Acacia tree is fast growing and known for its beautifully figured grain and distinct sap lines.

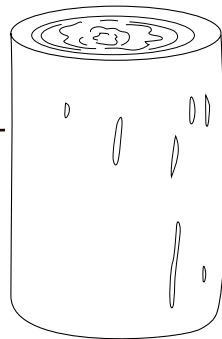
Solid slabs can vary from 2" - 3" thick.

Each Grove slab features a protective clear coat to enhance the natural cracks of the solid wood.

Butterflies are hand placed based on the tables natural cracks. Natural cracks in the wood are considered normal and enhance the beauty of the tables.

Every stool/table is unique with live edge detailing

Stool/Table depth varies



The DARRAN Grove Collection features natural live edge solid wood slab tables. The Grove slabs are all individually unique with different grain variations, knots, variations in color, splits, and holes that all add to the natural beauty of each table. The natural characteristics are further enhanced by a protective varnish top coat that provides superior resistance to water marks, heat damage, chemical contact, and scratch resistance.

## CARE

In order to maintain the natural beauty of your Grove table, DARRAN recommends the following:

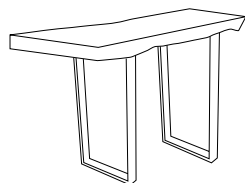
- › Clean your Grove Table using a soft, damp cloth with a mild soap and wipe dry.
- › DARRAN's protective varnish top coat uses the latest advanced finishing technology to preserve the beauty of each Grove Table. Even with this protection, DARRAN recommends the use of coasters with drinks and to clean up any spilled liquids immediately. Avoid direct contact with hot items, harsh chemicals, and some plastic feet on desk accessories as they could damage the finish.
- › Take into account the humidity levels. This natural solid wood will continually contract and expand throughout its life and it will remain very sensitive to abrupt environment change, such as humidity, long after it has been harvested. Humidity levels should always remain between 30-50% to preserve your Grove table. Exposure to extreme fluxuations can cause additional cracking in the slab and would not be considered a manufacturer defect. A furniture repair expert can secure a new crack with a wood butterfly and then recoat the top.
- › Avoid placing your table in direct sunlight to prevent wood bleaching and color changes associated with UV exposure.



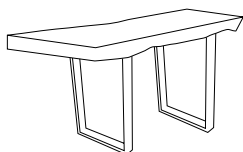
## WARRANTY

All tables and bases have a one-year warranty. We will repair or replace (at our option) any faulty product deemed to have been caused by manufacturing defects. Live edge materials have inherent inconsistencies, natural defects and irregularities that are part of their unique nature. These are considered to be desired effects. Solid wood adjusts different times of the year to the moisture content of the air. In a sense the wood breathes. Wood will also adjust to the moisture content of your office and its surroundings. You may notice your slab furniture piece move and develop small cracks or dips. This is normal. Slab furniture cannot be compared to other solid wood furniture pieces. This product will have movement during its life and this is just the nature of natural wood slab furniture.





42" Bar Height



30" Worksurface Height

**LIVE EDGE CONFERENCE TABLE**

**STANDARD FEATURES**

- Black Metal Legs are standard
- Tops are 2" - 3" thick
- Bases have adjustable glides for leveling

figured grain with distinct sap line edges

**NOTES**

- Butterflies are hand placed based on the tables natural characteristic
- Natural cracks in the wood are considered normal and enhance the beauty of the table
- Slabs are cut from the Acacia Tree and has

[CLICK HERE TO VIEW PRODUCT INDEX](#)

**1 SELECT A STYLE**

DIMENSIONS		STYLE NUMBER	LIST PRICE	STYLE NUMBER	LIST PRICE	STYLE NUMBER	LIST PRICE
W" x D" x H"	WGT	"W" Veneer Veneer Top Veneer Chassis		"G" HPL High Pressure Laminate Top Veneer Chassis		"M" TFL Thermally Fused Laminate Top Thermally Fused Laminate Chassis	
<b>42" Bar Height</b>							
120 Width	775	GRO12042RE400W	14139	"G" Option N/A		"M" Option N/A	
96 Width	575	GRO9642RE400W	9027	"G" Option N/A		"M" Option N/A	
76 Width	375	GRO7642RE400W	6733	"G" Option N/A		"M" Option N/A	
<b>30" Worksurface Height</b>							
120 Width	750	GRO12030RE400W	13784	"G" option N/A		"M" Option N/A	
96 Width	550	GRO9630RE400W	8792	"G" Option N/A		"M" Option N/A	
76 Width	350	GRO7630RE400W	6508	"G" Option N/A		"M" Option N/A	

*\*Table depth and thickness varies. Inventory and slab dimensions can be viewed at [darran.com](http://darran.com) under the Grove collection.*

**2 SELECT A FINISH**

"W" Veneer	"G" HPL	"M" TFL	
WLE	-	-	Clear Coat
<b>METAL FINISH</b>			
MFB	-	-	Black
MFS	-	-	Silver (Premium Finish)
MFMB	-	-	Matte Black (Premium Finish)

**3 SELECT AN EDGE**

Edge Profile  
Option Not Available

**5 OPTIONS**

**PREMIUM FINISH OPTION**

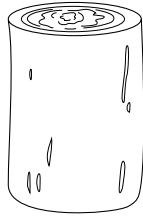
- MFS: Silver Metal Finish - \$95 per base
- MFMB: Matte Black Metal Finish - \$95 per base

**POWER**

- REF-310: 3 Power, 1 convenience, 2 USB, 1 Data plate knockout, 2 RJ45 knockouts, 108" power cord, Black - \$1450
- W17: Wire management cover - \$75 For 30" worksurface height
- W20: Wire management cover - \$100 For 42" worksurface height
- PD-COVE: Rectangle Power Unit - \$550
- COV-DCH: Cove Linking System Starter Kit - \$1060
- COV-DCP: Plug Starter - \$1115
- COV-DCL: Linking Power - \$925

**4 SELECT HARDWARE**

Hardware  
Option Not Available



ACACIA STOOL / ROUND TABLE

STANDARD FEATURES

NOTES

- Butterflies are hand placed based on the tables natural characteristic
- Natural cracks in the wood are considered normal and enhance the beauty of the table
- Stools are cut from the Acacia tree and has figured grain with distinct sap line edges

[CLICK HERE TO VIEW PRODUCT INDEX](#)

**1 SELECT A STYLE**

DIMENSIONS		STYLE NUMBER	LIST PRICE	STYLE NUMBER	LIST PRICE	STYLE NUMBER	LIST PRICE
W" x D" x H"	WGT	<b>"W"</b> Veneer Top Veneer Chassis		<b>"G"</b> HPL High Pressure Laminate Top Veneer Chassis		<b>"M"</b> TFL Thermally Fused Laminate Top Thermally Fused Laminate Chassis	
12 dia x 17	50	GRO1217AS372W	447	"G" Option N/A		"M" Option N/A	

\* Stool/Table depth varies

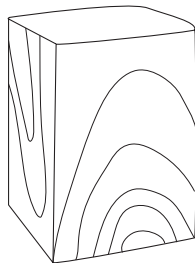
**2 SELECT A FINISH**      **3 SELECT AN EDGE**      **5 OPTIONS**

"W"	"G"	"M"	
Veneer	HPL	TFL	
WLE	-	-	Clear Coat

Edge Profile  
Option Not Available

**4 SELECT HARDWARE**

Hardware  
Option Not Available



**ACACIA STOOL / SQUARE TABLE**

STANDARD FEATURES

NOTES

- Butterflies are hand placed based on the tables natural characteristic
- Natural cracks in the wood are considered normal and enhance the beauty of the table
- Stools are cut from the Acacia tree and has figured grain with distinct sap line edges

[CLICK HERE TO VIEW PRODUCT INDEX](#)

**1 SELECT A STYLE**

DIMENSIONS		STYLE NUMBER	LIST PRICE	STYLE NUMBER	LIST PRICE	STYLE NUMBER	LIST PRICE
W" x D" x H"	WGT	<b>"W"</b> Veneer Top Veneer Chassis		<b>"G"</b> HPL High Pressure Laminate Top Veneer Chassis		<b>"M"</b> TFL Thermally Fused Laminate Top Thermally Fused Laminate Chassis	
12 x 12 x 18	60	GRO1212CM373W	657	"G" Option N/A		"M" Option N/A	

\* Stool/Table depth varies

**2 SELECT A FINISH**

<b>"W"</b> Veneer	<b>"G"</b> HPL	<b>"M"</b> TFL	Clear Coat
WLE	-	-	Clear Coat

**3 SELECT AN EDGE**

Edge Profile  
Option Not Available

**5 OPTIONS**

**4 SELECT HARDWARE**

Hardware  
Option Not Available



**ACACIA STOOL / ROUND TABLE**  
STANDARD FEATURES

NOTES

- Butterflies are hand placed based on the tables natural characteristic
- Natural cracks in the wood are considered normal and enhance the beauty of the table
- Stools are cut from the Acacia Tree and has figured grain with distinct sap line edges

[CLICK HERE TO VIEW PRODUCT INDEX](#)

**1 SELECT A STYLE**

DIMENSIONS		STYLE NUMBER	LIST PRICE	STYLE NUMBER	LIST PRICE	STYLE NUMBER	LIST PRICE
W" x D" x H"	WGT	<b>"W"</b> Veneer Top Veneer Veneer Chassis		<b>"G"</b> High Pressure Laminate Top HPL Veneer Chassis		<b>"M"</b> Thermally Fused Laminate Top TFL Thermally Fused Laminate Chassis	
16 dia x 21	140	GRO1621AS372W	903	"G" Option N/A		"M" Option N/A	

\* Stool/Table depth varies

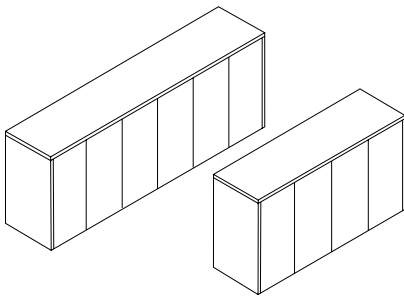
**2 SELECT A FINISH**      **3 SELECT AN EDGE**      **5 OPTIONS**

<b>"W"</b> Veneer	<b>"G"</b> HPL	<b>"M"</b> TFL	
WLE	-	-	Clear Coat

Edge Profile  
Option Not Available

**4 SELECT HARDWARE**

Hardware  
Option Not Available



**STORAGE WITH DOORS**

**STANDARD FEATURES**

- 1 adjustable shelf per door section
- Floor levelers (adjustable 1/2")
- Open Plan
- Touch latch doors

High pressure laminate.

**NOTES**

- Exterior of case is a nanotech material that features low light reflectivity, opaque surface, anti-finger print and soft touch. Thermal heals any superficial micro-scratches. Case interior is

[CLICK HERE TO VIEW PRODUCT INDEX](#)

**1 SELECT A STYLE**

DIMENSIONS		STYLE NUMBER	LIST PRICE	STYLE NUMBER	LIST PRICE	STYLE NUMBER	LIST PRICE
W" x D" x H"	WGT	"W" Veneer Top Veneer Chassis		"G" HPL Exterior: Nanotech Interior: HPL		"M" TFL Thermally Fused Laminate Top Thermally Fused Laminate Chassis	
<b>90" 6 Door Storage Credenza</b>							
90 x 24 x 36	490	"W" option N/A		GRO9036CA125G	8159	GRO9036CA125M	2975
90 x 24 x 30	330	"W" option N/A		GRO9030CA125G	7014	GRO9030CA125M	2330
<b>84" 4 Door Storage Credenza</b>							
84 x 24 x 36	460	"W" Style N/A		GRO8436CA125G	7156	GRO8436CA125M	2745
84 x 24 x 30	310	"W" Style N/A		GRO8430CA125G	6153	GRO8430CA125M	2150
<b>72" 4 Door Storage Credenza</b>							
72 x 24 x 36	395	"W" Style N/A		GRO7236CA125G	6153	GRO7236CA125M	2370
72 x 24 x 30	265	"W" Style N/A		GRO7230CA125G	5292	GRO7230CA125M	1855

**2 SELECT A FINISH**

- "W" Veneer "G" HPL "M" TFL
- EXTERIOR**
- LAW - Alaska
  - LNB - Nero
- Colors available on HPL units only
- INTERIOR**
- LHR - Hollyberry
  - LLB - Lapis Blue
  - LIG - Island Green
  - LOG - Orange Grove

**3 SELECT AN EDGE**

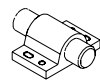


Flat 3 mm

**5 OPTIONS**

- DOOR**
- D2: Wood Door Lock - \$95 per Door Set
- REFRIGERATOR**
- REF-01: Specify Right or Left Refrigerator option (Water mat, heat vent and grommet hole) - \$195
- TRASH CAN**
- Specify Location
- TRC50: E2 - Cargo 50 dual trash can (1) 8 gallon + (1) 5 gallon - \$650

**4 SELECT HARDWARE**



Touch Latch



## AIRCHARGE WIRELESS CHARGING GROMMET

STYLE NUMBER	LIST PRICE
ACWG WIRELESS GROMMET	\$575
ACWR WIRELESS RECEIVER W/ LIGHTNING CABLE	\$170

### SPECIFICATIONS

- AirCharge offers a convenient way to charge any Qi compatible smartphone or device without the need to carry charging cables or find an available power outlet. Devices not equipped with the Qi technology, can be adapted to accept a charge from the grommet with the AirCharge Wireless Receiver.
- Size: 3.33" DIA x .75"D
- Compatible with an Qi rated device, Contact Customer Service for compatibility list
- Non-Qi device can be adapted to accept AirCharge unit with an ACWR AirCharge Wireless Receiver (compatible with iPhone)
- Surface Mount
- 78" Cord
- Standard Black Aluminum Finish; Available in White Aluminum or Black Finish upon request

### AVAILABLE

- All Darran Collections



AirCharge Wireless Grommet



iphone w/ ACWR



Black Aluminum



Black Finish



White Aluminum

## COVE POWER UNIT - NON-LINKING

STYLE NUMBER	LIST PRICE
 PD COVE PLUG Non-Linking Version	\$550

### SPECIFICATIONS

- Size 5.75" L x 2.5" W
- (2) 15 Amp Receptacles and (2) USB charging ports
- Surface Mount
- 108" Cord
- Standard Silver Finish, Available in White or Black Finish upon request
- ETL Listed

### AVAILABLE

- All Darran Collections



## COVE CORDED SERIES

### STYLE NUMBER

### LIST PRICE



PD-COVE-PKO

\$800



### SPECIFICATIONS

- Size 9.5"L x 2.5"W x 3.18"D
- (2) Power Receptacles, (2) 2.1 Amp USB charging ports and (1) Telecom Plate Knockout
- Surface Mount
- 108" Cord
- Standard Silver Finish, Available in White or Black Finish upon request
- ETL Listed

### AVAILABLE

- All Darran Collections

### TELECOM PLATES

*THIS POD CAN HAVE UP TO 1 TOTAL PLATES*

STYLE NUMBER	LIST PRICE
RJ45 (1)	\$35
RJ45 (2)	\$70
RJ45 (3)	\$105
USB (1)	\$70
USB (2)	\$140
RJ11/RJ45	\$70
RJ45/USB	\$105
RJ45/HDMI	\$190
HDMI/DVI	\$325
HDMI/USB	\$205
HDMI/VGA	\$240
VGA/MINI-STEREO	\$155
VGA/USB	\$175

## REEF POWER UNIT WITH DAISYLINK

### STYLE NUMBER

### LIST PRICE



REF310 PLUG

\$1100

### SPECIFICATIONS

- Size 16.1"L x 6.25"W x 4.89"D
- (3) 120V Receptacles, (2) USB charging ports, 1 Data Plate Knockout, (2) Knockouts for RJ45 Data Ports
- Surface Mount
- 108" Cord
- Features Convenience Plug on bottom of unit that allows for max (3) Daisy Chain
- Standard Black Finish, Available in White or Silver Finish upon request
- Additional Telecom Plate Knockout
- When used with Grove Tables an additional \$350 LIST will apply for the special cutout required.
- RJ45 for Knockouts not required. If not ordered a small hole will be present in the pod in this this location
- ETL Listed

### AVAILABLE

- Grove
- Conferencing



### TELECOM PLATES

*THIS POD CAN HAVE UP TO 1 TOTAL PLATES*

STYLE NUMBER	LIST PRICE
RJ45 (1)	\$35
RJ45 (2)	\$70
RJ45 (3)	\$105
USB (1)	\$70
USB (2)	\$140
RJ11/RJ45	\$70
RJ45/USB	\$105
RJ45/HDMI	\$190
HDMI/DVI	\$325
HDMI/USB	\$205
HDMI/VGA	\$240
VGA/MINI-STEREO	\$155
VGA/USB	\$175

