

DARRAN®



Fion Price List

Effective June 2024

Designed by Chrissy Fehan

Date	Page	Modification	Description
------	------	--------------	-------------

DARRAN®

Statement of Line

Guest seating fabric & leather program.....	1
Finishes.....	4
Guest.....	6
Ottoman.....	7

Statement of Line



Page 6
Return to center Lounge



Page 7
Ottoman

DARRAN®

Seating & fabric leather program

DARRAN has partnered with some of the most prestigious fabric suppliers of the office furniture industry to bring you quality fabrics that are engaging designs, environmentally friendly and durable for years to come. The majority of fabrics we have graded-in are in heavy supply making it most likely available on our Quickship however, we cannot guarantee stock. If you do not see the fabric you wish to include in a project, please contact Customer Service to see if this pattern can be graded in at 800.334.7891.

Fabrics & Leathers

Please visit our Seating Fabrics page at darran.com/textilesleather

Camira
www.camirafabrics.com
800.334.789

Wollsdorf
www.wollsdorf.com
336.884.5005

CFStinson
www.cfstinson.com
800.841.6279

Green Hides
www.greenhides.com
336.315.9720

DesignTex
www.designtex.com
800.797.4949

Kvadrat
www.kvadrat.fabrics.com
+45 8953 1866

Maharam
www.maharam.com
800.645.3943

Momentum Textiles
www.momentumtextiles.com
800.366.6839

Ultrafabrics
www.ultrafabricsinc.com
800.334.7891

Application instructions must be specified on the purchase order or COM / COL submission form. In the absence of application instructions, DARRAN will apply materials accordingly.

Fion Seating Fabric & Leather Program

CAL117

All DARRAN seating products conform to California Technical Bulletin 117 as a minimum standard.

CAL133

To meet the California Technical Bulletin 133 flammability regulation, a combination of proper materials must be used to pass, as it tests the fire resistance of a finished product. Flame resistant fabric, a fire blocker material and special foam must be used to pass CAL133 fire codes.

Testing is available for all seating products with the following fees and considerations:

- If laboratory certification is not required, any style can be manufactured to comply with California Technical Bulletin 133 for \$75 list per yard required. (Customer's Own Materials must factor in additional yardage requirements based on repeat.)
- The purchase order must clearly indicate the requirement of California Technical Bulletin 133
- If laboratory California Technical Bulletin 133 certification is required, the cost of testing a chair is \$820 NET, plus the cost of the chair and covering material.
- An additional lead time of 4 to 6 weeks is required for testing for CAL133.
- Once testing is completed, we will provide a certification letter specific to the sample tested for CAL133.
- DARRAN's manufacturing procedures for California TB 133 compliance are based on the testing of representative style with specific fabrics. Please contact Customer Service for an updated list of tested models.
- A copy of test certification is available upon request.W

Combination fabrics

DARRAN is pleased to offer customers the design freedom of combination fabrics. When using fabric, vinyl or leather combinations, pricing will be as follows:

- When combining two materials of the same grade, pricing will be specified grade + 5%.
- If combining two materials of different grades or leather/ fabric combination, use the highest grade/price + 5%.
- If using COM or COL, pricing will be COM or COL + 5%. If both COM + COL are used in combination, use COL + 5%

COM/COL ordering instructions

Please complete the COM Submission Form prior to ordering the fabric from the supplier. All COM fabrics must be approved prior to order submission. Please refer to our website or contact DARRAN Seating Customer Service for an updated list of preapproved COM fabrics. Application instructions must be specified on the purchase order or COM/COL approval form. In the absence of application instructions, DARRAN will apply materials in the best manner and cannot be held responsible for tailoring or application objections after upholstering. COM orders will be scheduled for production after receipt of the material. Packages must be clearly marked and the fabric must be first quality, continuous yardage.

COM/COL yardage requirements

The yardage requirements stated in this price list for each style are calculated using 54" wide, non-directional fabrics. For fabrics with a different width or for patterns with repeats, please refer to the below chart to calculate the additional percent of fabric required:

Fabric Width	Plain Fabric	2"- 14" Repeat	15"- 19"Repeat	20"- 27"Repeat	28"- 36" Repeat
54"	0	15%	20%	25%	30%
53"	6%	19%	24%	28%	36%
52"	13%	23%	28%	33%	38%
51"	19%	26%	31%	36%	41%
50"	25%	30%	35%	40%	45%
49"	30%	35%	40%	45%	50%
48"	35%	40%	45%	50%	55%
47"	45%	50%	55%	58%	65%

DARRAN®

NOTE: Prior To Completion Of This Form, Please Refer To Our Graded In Materials Program For Preapproved Fabrics/Leathers.

COM/COL Approval

DARRAN Furniture Industries
2402 Shore Street, High Point, NC 27263
ATTN: Seating Division / COM/COL Approval
TAG: DARRAN Quote Number

Shipping approved COM/COL materials

DARRAN Furniture Industries
2402 Shore Street, High Point, NC 27263
ATTN: Seating Division / COM/COL Approval
TAG: DARRAN Quote Number

Please complete this form, attach a 6"x 6" sample and mail to the COM/COL APPROVAL address shown above.
This form can also be downloaded from our website at www.darran.com/leathers OR www.darran.com/fabrics

Quote # _____

Dealer's Name _____

Contact _____

Address _____

Telephone _____

Email _____

Chair Stlye _____

Manufacturer _____

Pattern Name _____

Pattern Color _____

Content _____

Repeat _____

Please specify any special requirements and check the application above.

Fion Seating Fabric & Leather Program

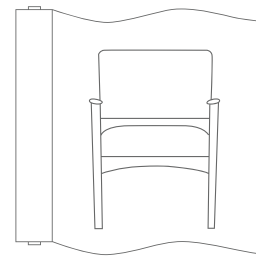
ATTACH 6" X 6" FABRIC/LEATHER SAMPLE HERE

NOTE
Actual Fabric/Leather samples needed instead of digital images. If digital images are sent in lieu of samples, DARRAN will only verify the pattern and will not take responsibility for color variances that cannot be verified due to printing limitations.

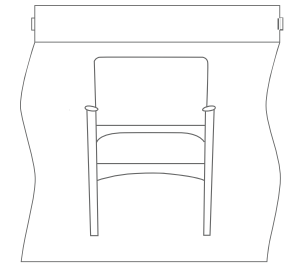
In the absence of application instructions, DARRAN will apply the material in the best manner and cannot be held responsible for tailoring or application objections after upholstering.

Unless otherwise instructed on the purchase order, excess COM materials will be recycled at the discretion of DARRAN after six months of the original product ship date.

The COM approval solely pertains to the application of the fabric onto the specified DARRAN seating product. DARRAN's approval or acceptance does not constitute any responsibility or warranty to the overall appearance, durability, flammability, defects, dye lot variations or colorfastness of the COM. It is the customer's responsibility to ensure the COM meets CAL 117 compliance and are first quality continuous goods.

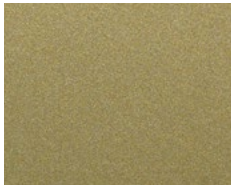


RAILROAD

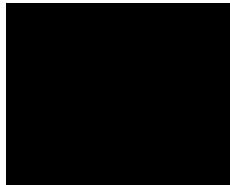


SETUP

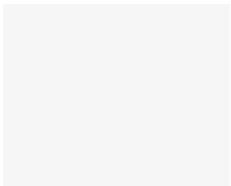
POWDERCOATS



MFGS Gold Satin
(Standard)



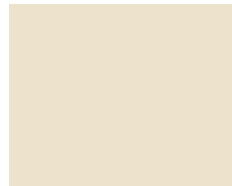
MFB Black
(Standard)



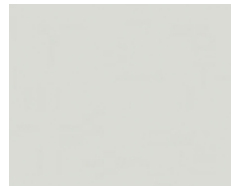
MFW White
(Premium)



MFCH Chrome
(Premium)



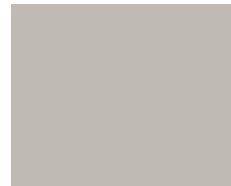
MFOS Oyster
(Premium)



MFGW Gray White
(Premium)



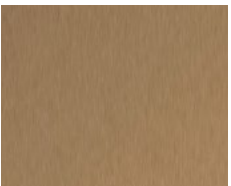
MFS Silver
(Premium)



MFG Grey
(Premium)



MFGB Grey Beige
(Premium)



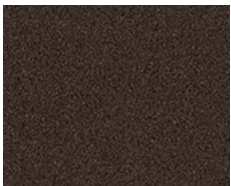
MFSB Satin Bronze
(Premium)



MFNA Navy
(Premium)



MFGG Graphite Gray
(Premium)



MFDB Dark Bronze
(Premium)



MFMB Matte Black
(Premium)



Finish **welltech**
FINISH TECHNOLOGY

Welltech Finish delivers a superior furniture coating with exceptional performance that can withstand stringent cleaning agents and possesses unparalleled durability, allowing DARRAN to provide lasting, sustainable products to our customers.



Fion
Wingback Chair

[Click here to view statement of line](#)



1 Model
FIO2332WBC27

w" x d" x h"
33 x 36 x 43.5
Arm Height 25"
Seat Height 18"
Inside Seat Depth 22"
Inside Seat Width 19.5"

COM	COL	1	2	3	4	5	6	7	8	9	10	11/L1	12	13/L2
2980	3099	3218	3337	3456	3575	3694	3813	3932	4051	4170	4289	4408	4646	2270

Upholstery Requirements
Fabric yds: 6.5 Leather Sq. Ft.: 117
Carton Weight: 70

Product Features

- CNC cut hardwood upholstery frame
- Soy based multi-density soy based foam block construction.
- Return to center 360° swivel
- Laser cut, roll formed steel base standard in Satin Gold
- Premium base colors available for \$190/base. See front of Pricelist.

2 Select Base Finish

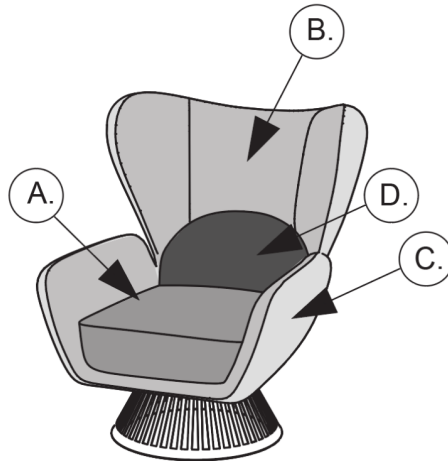
[Click to view finishes](#)

Satin Gold Standard (Click for Premium Options)

3 Combination Fabrics

DARRAN is pleased to offer customers the design freedom of combination fabrics. When using fabric, vinyl or leather combinations, pricing/yardage requirements will be as follows:

- A Tight Seat 2 yds.
- B Inside Back & Arms 2 yds.
- C Outside Back & Arms 4.25 yds.
- D Lumbar ~~# of~~



- When combining two materials of the same grade pricing will be specified grade + 5%
- If combining two materials of different grades or leather/fabric combination, use the highest grade/price + 5%
- If using COM or COL, pricing will be COM or COL + 5%.
- If both COM + COL are used in combination, use COL + 5%.

Fion

Fion
Ottoman

[Click here to view statement of line](#)



1 Model

FIO2332SSO01

COM	COL	1	2	3	4	5	6	7	8	9	10	11/L1	12	13/L2
1193	1216	1239	1262	1285	1308	1331	1354	1377	1400	1423	1446	1469	1492	1538

w" x d" x h"
20.5 x 20.5 x 31
Arm Height NA
Seat Height 18"
Inside Seat Depth NA
Inside Seat Width NA

Upholstery Requirements
Fabric yds: 1.25 Leather Sq. Ft.: 22.5
Carton Weight: 20

Product Features

- CNC cut hardwood upholstery frame
 - Soy based multi-density soy based foam block construction.
 - Laser cut, roll formed steel base standard in Satin Gold
- Premium base colors available for \$190/base. See front of Pricelist.

2 Select Base Finish

[Click to view finishes](#)

Satin Gold Standard (Click for Premium Options)

Combination
Fabric Option
Not Available