

DARRAN®



## Honey Flex Price List

Effective June 9, 2023

Designed By Mark Müller and Christopher Wright



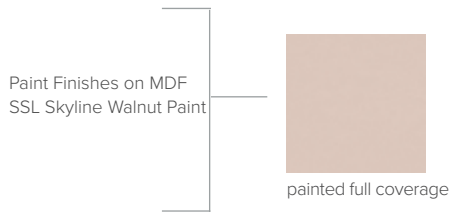
Page 7  
Freestanding Desk  
Wood Legs



Page 8  
Freestnding Desk  
Metal Legs

**MATTE 5% SHEEN VENEER**

Specify LST-40 to change matte 5% sheen to gloss 40% sheen - N/C.



- TSTV Studio Teak Walnut
- TSLV Skyline Walnut
- WEC Ebony
- WOW Clear Walnut
- WNO Natural Oak
- WLO Lofty Oak
- WSO Salted Oak
- WBW Henna Walnut
- WSW Smokey Walnut
- WWP Designer White
- WWW Weathered Walnut

**HIGH PRESSURE LAMINATE**

- GWL
- GEC
- GAM
- GCM
- GSLV
- GSTV

**THERMALLY FUSED LAMINATE**

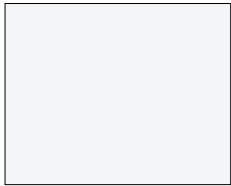
- MEC Ebony
- MOC Koko Cherry
- MSW Skyline Walnut
- MTW Studio Teak
- MWL Designer White
- MNA Narvik Ash
- MWW Weathered Walnut



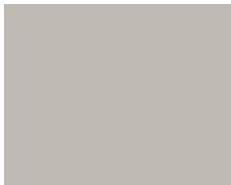
Welltech Finish delivers a superior furniture coating with exceptional performance that can withstand stringent cleaning agents and possesses unparalleled durability, allowing DARRAN to provide lasting, sustainable products to our customers.

Metal stretcher is standard in MFW White. Optional premium metal finishes are available.

STANDARD



MFW White  
(Standard)



MFG Gray  
(Premium)



MFGG Graphite Gray  
(Premium)



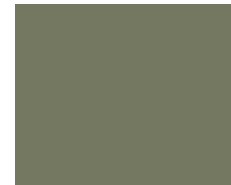
MFS Silver  
(Premium)



MFMB Matte Black  
(Premium)



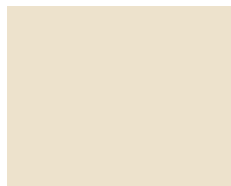
MFNA Navy  
(Premium)



MFOL Olive  
(Premium)



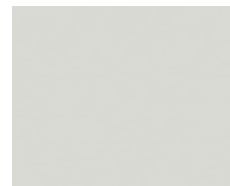
MFGB Grey Beige  
(Premium)



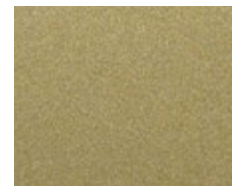
MFOS Oyster  
(Premium)



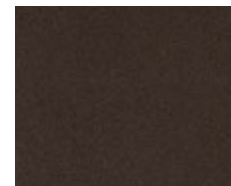
MFSB Satin Bronze  
(Premium)



MGW Gray White  
(Premium)



MFGM Gold  
(Premium)



MFDB Dark Bronze  
(Premium)

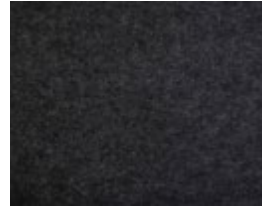
PET felt screens are available in the colors below.



Light Gray  
3



Deep Blue  
09



Dark Gray  
17



Pure Gray  
34



Berry Red  
36



Ivory  
44



Emerald  
47



Smokey Beige  
53

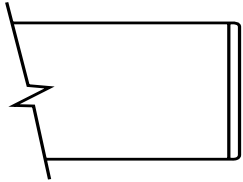


Heathered Granite  
71



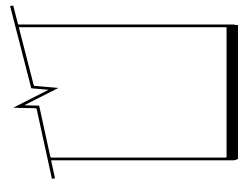
Heathered Oatmeal  
75

Standard profile



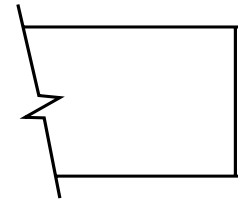
**Flat-1**

"W" "G"  
 "W" 3mm Hardwood Band  
 "G" Matching PVC Band



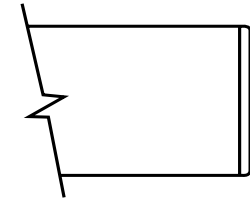
**Flat-2**

"W" "G" "M"  
 2mm Black  
 PVC Band



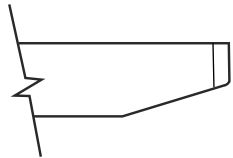
**Flat-3**

"W" "G" "M"  
 2mm White  
 PVC Band



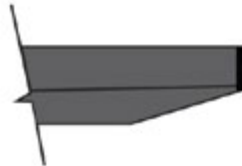
**Flat-4**

"M"  
 2mm Matching PVC Band



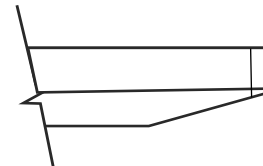
**Cliff-1**

"W" "G"  
 "W" 3mm Hardwood Band  
 "G" Matching PVC Band  
 Cutback is finished to match top



**Cliff-2**

"W" "G"  
 2mm Black PVC Band  
 Cutback is finished to match top



**Cliff-3**

"W" "G"  
 2mm White PVC Band  
 Cutback is finished to match top



[Click here to view statement of line](#)

## 1 Select Model

w" x d" x h"

Weight

	Standard Veneer Top	Premium Veneer Top	High Pressure Laminate Top	Thermally Fused Laminate Top
48" x 22.5 x 29/51.5	HNY4822DT101W 3630	"P" Option N/A	HNY4822DT101G 3580	HNY4822DT101M 3530
<b>2 Top Select Finish</b> Click to view finishes	PO01 WOV PO03 WWW PO07 WBW PO08 WSW WWP WEC WNO WLO TSTV TSLV		GWL GEC GAM GCM GSLV GSTV	MOC MEC MSW MTW MWL MWW
<b>3 Select Leg Finish</b> Click to view finishes	PO01 SSL PO03 WOW(+\$75) PO07 WWW(+\$75) PO08 WBW(+\$75) WWP WSW(+\$75) WEC WNO WSO WLO TSTV		WWP WNO WEC WOW(+\$75) WAM WWW(+\$75) WCM WBW(+\$75) SSL WSW(+\$75) TSTV PO01 PO03 PO07 PO08	WOC WNO WEC WLO SSL WOW(+\$75) TSTV WBW(+\$75) WWP WSW(+\$75) WWW(+\$75) PO01 PO03 PO07 PO08
<b>4 Select Edge</b> Click to view edges				
<b>5 Select PET</b> Click to view PET	Light Gray 3 Deep Blue 9 Dark Gray 17 Pure Gray 34 Berry Red 36 Ivory 44 Emerald 47 Smoky Beige 53 Heathered Granite 71 Heathered Oatmeal 75		Light Gray 3 Deep Blue 9 Dark Gray 17 Pure Gray 34 Berry Red 36 Ivory 44 Emerald 47 Smoky Beige 53 Heathered Granite 71 Heathered Oatmeal 75	Light Gray 3 Deep Blue 9 Dark Gray 17 Pure Gray 34 Berry Red 36 Ivory 44 Emerald 47 Smoky Beige 53 Heathered Granite 71 Heathered Oatmeal 75

## Product Features

- 1" Thick top
- Recycled PET screen for privacy and sound mitigation
- Ships KD
- 4" deep fixed overhead accessory shelf
- Solid wood precision cut CNC machined hardwood legs for extra strength and stability

## Notes

- Overhead accessory shelf maximum weight limit of 5 lbs
- Solid wood legs connect to top with Extruded Aluminum Connectors that can be powdercoated to provide color accents
- Accessory shelf is 18 1/2" above worksurface

## Options

### Premium Metal Finish for Leg Connector

- Specify Metal Finish Color. MFMB: Matte Black, MFS: Silver, MFOS: Oyster, MFNA: Navy, MFOL: Olive, MFGG: Graphite Gray, MFG: Gray, MFDB: Dark Bronze, MFGM Gold, MFSB: Satin Bronze, MGW: Gray White - \$150
- Standard in MFW White

### Metal Undermount Shelf

- S30: Metal undermount shelf for desktop comes standard in MFW White \$150

### Premium Metal Finish for Shelf

- Specify Metal Finish Color. MFMB: Matte Black, MFS: Silver, MFOS: Oyster, MFNA: Navy, MFOL: Olive, MFGG: Graphite Gray, MFG: Gray, MFDB: Dark Bronze, MFGM Gold, MFSB: Satin Bronze, MGW: Gray White - \$75

### Caster Option

- CST35 (4 casters) \$95








[Click here to view statement of line](#)

## 1 Select Model

w" x d" x h"

Weight

	Standard Veneer Top	Premium Veneer Top	High Pressure Laminate Top	Thermally Fused Laminate Top
48" x 22.5 x 29/51.5	HNY4822DT100W 3850	"P" Option N/A	HNY4822DT100G 3799	HNY4822DT100M 3749
<b>2 Top Select Finish</b> Click to view finishes	PO01 WOW PO03 WWW PO07 WBW PO08 WSW WWP WEC WNO WLO TSTV TSLV		GWL GEC GAM GCM GSLV GSTV	MOC MEC MSW MTW MWL MWW
<b>3 Select Leg Finish</b> Click to view finishes	Metal Finish Standard MFW White Powdercoat		Metal Finish Standard MFW White Powdercoat	Metal Finish Standard MFW White Powdercoat
<b>4 Select Edge</b> Click to view edges	 		 	
<b>5 Select PET</b> Click to view PET	Light Gray 3 Deep Blue 9 Dark Gray 17 Pure Gray 34 Berry Red 36 Ivory 44 Emerald 47 Smoky Beige 53 Heathered Granite 71 Heathered Oatmeal 75		Light Gray 3 Deep Blue 9 Dark Gray 17 Pure Gray 34 Berry Red 36 Ivory 44 Emerald 47 Smoky Beige 53 Heathered Granite 71 Heathered Oatmeal 75	Light Gray 3 Deep Blue 9 Dark Gray 17 Pure Gray 34 Berry Red 36 Ivory 44 Emerald 47 Smoky Beige 53 Heathered Granite 71 Heathered Oatmeal 75

## Product Features

- 1" Thick top
- Recycled PET screen for privacy and sound mitigation
- Ships KD
- 4" deep fixed overhead accessory shelf
- Extruded legs are powder coated for long lasting durability

## Notes

- Overhead accessory shelf maximum weight limit of 5 lbs
- Accessory shelf is 18 1/2" above worksurface

## Options

### Premium Metal Finish for Leg

- Specify Metal Finish Color. MFMB: Matte Black, MFS: Silver, MFOS: Oyster, MFNA: Navy, MFOL: Olive, MFGG: Graphite Gray, MFG: Gray, MFDB: Dark Bronze, MFGM Gold, MFSB: Satin Bronze, MGW: Gray White - \$175

### Metal Undermount Shelf

- S30: Metal undermount shelf for desktop comes standard in MFW White \$150

### Premium Metal Finish for Shelf

- Specify Metal Finish Color. MFMB: Matte Black, MFS: Silver, MFOS: Oyster, MFNA: Navy, MFOL: Olive, MFGG: Graphite Gray, MFG: Gray, MFDB: Dark Bronze, MFGM Gold, MFSB: Satin Bronze, MGW: Gray White - \$75

### Caster Option

- CST35 (4 casters) \$95