

DARRAN®



## Kuna Price List

Effective May 2025

Designed By DARRAN Studio

Date                      Page                      Modification

Statement of Line  
Kuna Seating Fabric & Leather Program ..... 1  
Metal Finishes ..... 4  
Seating Specification ..... 5  
Kuna Seating..... 6



Page 6  
High-Back Chair  
Aluminum Arms



Page 7  
Mid-Back Chair  
Aluminum Arms



Page 8  
High-Back Chair  
Armless



Page 9  
Mid-Back Chair  
Armless

Seating fabric & leather program

DARRAN has partnered with some of the most prestigious fabric suppliers of the office furniture industry to bring you quality fabrics that are engaging designs, environmentally friendly and durable for years to come. If you do not see the fabric you wish to include in a project, please contact Customer Service at 800.334.7891 to see if this pattern can be graded in

For current information about graded-in fabrics and leather, please visit our Resources page at [www.darran.com/resources/textiles-leather/](http://www.darran.com/resources/textiles-leather/)

Anzea  
[www.cfstinson.com/anzea](http://www.cfstinson.com/anzea)  
817.336.2310

Carroll Leather  
[www.carrollleather.com](http://www.carrollleather.com)  
828.466.5489

DesignTex  
[www.designtex.com](http://www.designtex.com)  
800.221.1540

HBF Textiles  
[www.hbftextiles.com](http://www.hbftextiles.com)  
877.494.5727

Kvadrat  
[www.kvadrat.dk](http://www.kvadrat.dk)  
+45 8953 1866

Maharam  
[www.maharam.com](http://www.maharam.com)  
800.645.3943

Sina Pearson  
[www.momentumtextilesandwalls.com/collections/sina-pearson](http://www.momentumtextilesandwalls.com/collections/sina-pearson)  
800.366.6839

Camira  
[www.camirafabrics.com](http://www.camirafabrics.com)  
616.288.0655

CF Stinson  
[www.cfstinson.com](http://www.cfstinson.com)  
800.841.6279

Green Hides  
[www.greenhides.com](http://www.greenhides.com)  
336.315.9720

Knoll Textiles  
[www.maharam.com/knoll-textiles](http://www.maharam.com/knoll-textiles)  
800.645.3943

Luna  
[www.lunatextiles.com](http://www.lunatextiles.com)  
616.288.0655

Momentum Textiles  
[www.momentumtextilesandwalls.com](http://www.momentumtextilesandwalls.com)  
800.366.6839

Ultrafabrics  
[www.ultrafabricsinc.com/proud-partnerships/partners-by-market/furniture/darran](http://www.ultrafabricsinc.com/proud-partnerships/partners-by-market/furniture/darran)  
877.309.6648

CAL 117-2013

All DARRAN seating products conform to California Technical Bulletin 117-2013 as a minimum standard.

ASTM E1537

Testing for ASTM E1537 is available for all DARRAN seating products If ASTM E1537 testing is required, please contact DARRAN customer service at 800.334.7891 for testing fees and considerations.

Combination fabrics

DARRAN is pleased to offer customers the design freedom of combination fabrics. When using fabric, vinyl or leather combinations, pricing will be as follows:

- When combining two materials of the same grade, pricing will be specified grade + 5%.
- If combining two materials of different grades or leather/ fabric combination, use the highest grade/price + 5%.
- If using COM or COL, pricing will be COM or COL + 5%. If both COM + COL are used in combination, use COL + 5%

COM/COL ordering instructions

Please complete the COM Submission Form prior to ordering the fabric from the supplier. All COM fabrics must be approved prior to order submission. Please refer to our website or contact DARRAN Seating Customer Service for an updated list of preapproved COM fabrics. Application instructions must be specified on the purchase order or COM/COL approval form. In the absence of application instructions, DARRAN will apply materials in the best manner and cannot be held responsible for tailoring or application objections after upholstering. COM orders will be scheduled for production after receipt of the material. Packages must be clearly marked and the fabric must be first quality, continuous yardage.

COM/COL yardage requirements

The yardage requirements stated in this price list for each style are calculated using 54” wide, non-directional fabrics. For fabrics with a different width or for patterns with repeats, please refer to the below chart to calculate the additional percent of fabric required:

Fabric Width	Plain Fabric	2”- 14” Repeat	15”- 19”Repeat	20”- 27”Repeat	28”- 36” Repeat
54”	0	15%	20%	25%	30%
53”	6%	19%	24%	28%	36%
52”	13%	23%	28%	33%	38%
51”	19%	26%	31%	36%	41%
50”	25%	30%	35%	40%	45%
49”	30%	35%	40%	45%	50%
48”	35%	40%	45%	50%	55%
47”	45%	50%	55%	58%	65%

NOTE: Prior to completion of this form, please refer to our Graded In Materials Program for pre-approved fabrics/leathers.

COM/COL Approval

DARRAN Furniture Industries  
2402 Shore Street, High Point, NC 27263  
ATTN: Seating Division / COM/COL Approval  
TAG: DARRAN Quote Number

Shipping approved COM/COL materials

DARRAN Furniture Industries  
2402 Shore Street, High Point, NC 27263  
ATTN: Seating Division / COM/COL Approval  
TAG: DARRAN Quote Number

Please complete this form, attach a 6"x 6" sample and mail to the COM/COL Approval address shown above.  
This form can also be downloaded from our website at [www.darran.com/resources/textiles-leather/](http://www.darran.com/resources/textiles-leather/)

Quote #

Dealer's Name

Contact

Address

Telephone

Email

Chair Style

Manufacturer

Pattern Name

Pattern Color

Content

Repeat

Please specify any special requirements and check the application above.

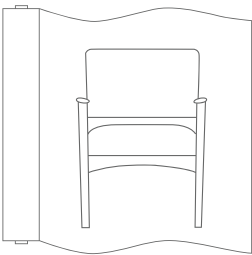
ATTACH 6" X 6" FABRIC/LEATHER SAMPLE HERE

NOTE  
Actual Fabric/Leather samples needed instead of digital images. If digital images are sent in lieu of samples, DARRAN will only verify the pattern and will not take responsibility for color variances that cannot be verified due to printing limitations

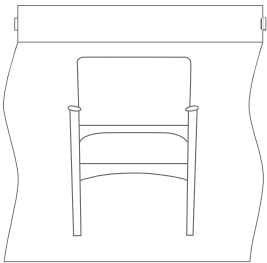
In the absence of application instructions, DARRAN will apply the material in the best manner and cannot be held responsible for tailoring or application objections after upholstering.

Unless otherwise instructed on the purchase order, excess COM materials will be recycled at the discretion of DARRAN after six months of the original product ship date.

The COM approval solely pertains to the application of the fabric onto the specified DARRAN seating product. DARRAN's approval or acceptance does not constitute any responsibility or warranty to the overall appearance, durability, flammability, defects, dye lot variations, or colorfastness of the COM. It is the customer's responsibility to ensure the COM meets CAL 117-2013 compliance and are first quality continuous goods.

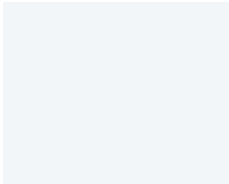


☐ RAILROAD

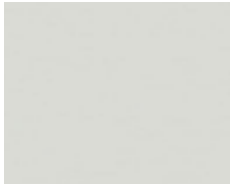


☐ SETUP

POWDERCOATS - ARMS AND BASES



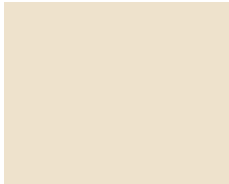
MFW White  
(Premium)



MFGW Gray White  
(Premium)



MFCH Chrome  
(Premium)



MFOS Oyster  
(Premium)



MFG Gray  
(Premium)



MFS Silver  
(Premium)



MFGB Grey Beige  
(Premium)



MFSB Satin Bronze  
(Premium)



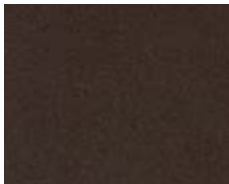
MFGM Matte Gold  
(Premium)



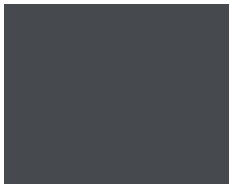
MFGS Satin Gold  
(Premium)



MFNA Navy  
(Premium)



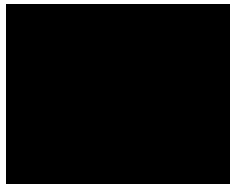
MFDB Dark Bronze  
(Premium)



MFGG Graphite Gray  
(Premium)



MFMB Matte Black  
(Premium)



MFB Black  
(Premium)





Kuna

High-Back Chair  
Aluminum Arms

[Click here to view statement of line](#)



1 Model  
KUN9625AAH15

w" x d" x h"  
25.5 x 27.5 x 43.25-46.25  
Arm Height 28-31"  
Seat Height 18-21"  
Inside Seat Depth 18"  
Inside Seat Width 21"

COM	COL	1	2	3	4	5	6	7	8	9	10	11/L1	12	13/L2
2298	2335	2372	2409	2446	2483	2520	2557	2594	2631	2668	2705	2742	2779	2853

Upholstery Requirements  
Fabric yds: 2    Leather Sq. Ft.: 36  
Carton Weight: 50

2 Select Finish

[Click to view finishes](#)

3 Material Selections

Combination  
Fabric Option  
Not Available

Product Features

- Precision contour molded plywood architecture
- Multi tension and height adjustable mechanism

Notes

- When choosing to powder coat the base, the height adjustable cylinder is black. When the standard polished aluminum base is selected, the height adjustable cylinder is chrome

Options

Casters

- Carpet casters standard
- CST20: hard surface casters - n/c

Premium Arm Metal Finishes

- Arms come standard in polished aluminum
- For optional premium colors, see front of Price List
- Specify metal finish color \$135

Premium Base Metal Finishes

- Base comes standard in polished aluminum
- For optional premium colors, see front of Price List
- Specify metal finish color \$135

Kuna

Mid-Back Chair  
Aluminum Arms

[Click here to view statement of line](#)



1 Model  
KUN9625AAM12

w" x d" x h"  
25.5 x 27.5 x 39.5-42.5  
Arm Height 28-31"  
Seat Height 18-21"  
Inside Seat Depth 18"  
Inside Seat Width 21"

COM	COL	1	2	3	4	5	6	7	8	9	10	11/L1	12	13/L2
2179	2216	2253	2290	2327	2364	2401	2438	2475	2512	2549	2586	2623	2660	2734

Upholstery Requirements  
Fabric yds: 2    Leather Sq. Ft.: 36  
Carton Weight: 45

2 Select Finish

[Click to view finishes](#)

3 Material Selections

Combination  
Fabric Option  
Not Available

Product Features

- Precision contour molded plywood architecture
- Multi tension and height adjustable mechanism

Notes

- When choosing to powder coat the base, the height adjustable cylinder is black. When the standard polished aluminum base is selected, the height adjustable cylinder is chrome

Options

Casters

- Carpet casters standard
- CST20: hard surface casters - n/c

Premium Arm Metal Finishes

- Arms come standard in polished aluminum
- For optional premium colors, see front of Price List
- Specify metal finish color \$135

Premium Base Metal Finishes

- Base comes standard in polished aluminum
- For optional premium colors, see front of Price List
- Specify metal finish color \$135

Kuna

High-Back Chair  
Armless

[Click here to view statement of line](#)



1 Model  
KUN9625NAH01

w" x d" x h"  
25.5 x 27.5 x 43.25-46.25  
Arm Height N/A  
Seat Height 18-21"  
Inside Seat Depth 18"  
Inside Seat Width 21"

COM	COL	1	2	3	4	5	6	7	8	9	10	11/L1	12	13/L2
1935	1972	2009	2046	2083	2120	2157	2194	2231	2268	2305	2342	2379	2416	2490

Upholstery Requirements  
Fabric yds: 2 Leather Sq. Ft.: 36  
Carton Weight: 50

2 Select Finish

[Click to view finishes](#)

3 Material Selections

Combination  
Fabric Option  
Not Available

Product Features

- Precision contour molded plywood architecture
- Multi tension and height adjustable mechanism

Notes

- When choosing to powder coat the base, the height adjustable cylinder is black. When the standard polished aluminum base is selected, the height adjustable cylinder is chrome

Options

Casters

- Carpet casters standard
- CST20: hard surface casters - n/c

Premium Base Metal Finishes

- Base comes standard in polished aluminum
- For optional premium colors, see front of Price List
- Specify metal finish color \$135

Kuna

Mid-Back Chair  
Armless

[Click here to view statement of line](#)



1 Model  
KUN9625NAM12

w" x d" x h"  
25.5 x 27.5 x 39.5-42.5  
Arm Height N/A  
Seat Height 18-21"  
Inside Seat Depth 18"  
Inside Seat Width 21"

Upholstery Requirements  
Fabric yds: 2    Leather Sq. Ft.: 36  
Carton Weight: 45

COM	COL	1	2	3	4	5	6	7	8	9	10	11/L1	12	13/L2
1869	1906	1943	1980	2017	2054	2091	2128	2165	2202	2239	2276	2313	2350	2424

Product Features

- Precision contour molded plywood architecture
- Multi tension and height adjustable mechanism

Notes

- When choosing to powder coat the base, the height adjustable cylinder is black. When the standard polished aluminum base is selected, the height adjustable cylinder is chrome

2 Select Finish

[Click to view finishes](#)

3 Material Selections

Combination  
Fabric Option  
Not Available

Options

Casters

- Carpet casters standard
- CST20: hard surface casters - n/c

Premium Base Metal Finishes

- Base comes standard in polished aluminum
- For optional premium colors, see front of Price List
- Specify metal finish color \$135